



Cleaning, oiling & adjusting your hair professional hair cutting shears

Type of cloth should be thin something like flannel, T-shirt material microfiber cloth are perfect. Open the shears into a cross and start cleaning inside blades, paying close attention to the ride area (area around the screw or tension adjuster) Get the inside blades absolutely clean, if there is chemical build up or just plain yucky crud, WD_40 or rubbing alcohol is the perfect cleaner for this. Close the shears and wipe down the outside, when cleaning near the finger rings be careful not to knock the silencer out, we have found over the years this is how many shears lose the silencer during the cleaning. Remove and clean inserts and inside finger rings, if possible, put clean inserts back in.

When shears are all clean, open them into a cross again, Place 1 drop of oil in the ride/pivot area. Oil should be clear, mineral oil, sewing machine oil is great. If you only have dark oil don't use it. Never spray clipper lube onto your blades, some of these products have fine grits and other chemicals you don't want on your shears. Point the tips at the floor and open and close shears several times, open and look at inside blades, any dirt etc. that was between the blades at the screw area will be flushed out and you can wipe off, leaving some oil behind. Do this every day and you will be amazed how long your blades will last between sharpening.

Check and set shear tension.

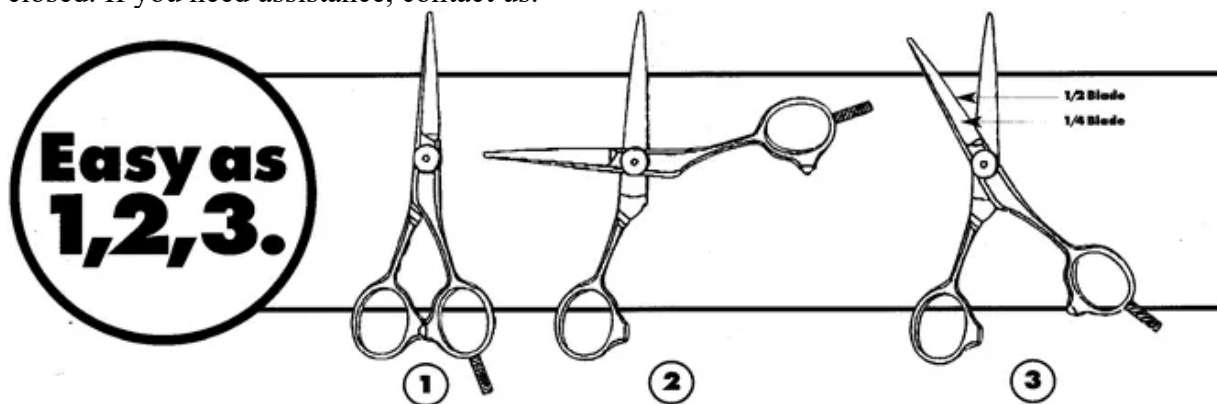
Keeping your shear's tension well-adjusted can triple the edge life of your tool and stop hair from buckling or folding in between the blades.

Follow these simple steps and watch what happens....

Please make sure your shears are thoroughly clean, and place 1 drop of shear oil in between the blades near the tension system before checking for tension.

1. Hold shear by thumb ring in left hand while pointing tip of shear towards ceiling.
2. Lift ring with finger rest to make a cross. Then let this ring fall.
3. Shear should have a slight drop as shown, but no further than half blade. Certain shears and thinners should have no drop.

To adjust tension; turn clockwise to tighten, counterclockwise to loosen. Make your adjustments with shears closed. If you need assistance, contact us.



Victoria Sharpening

www.victoriasharpening.ca

info@victoriasharpening.ca

David and Valerie Couture 250-886-8321 or 250-886-0851

